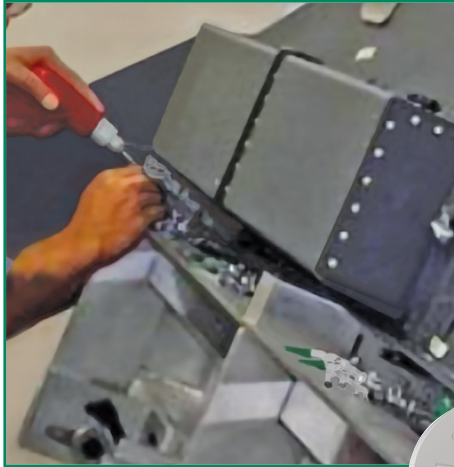
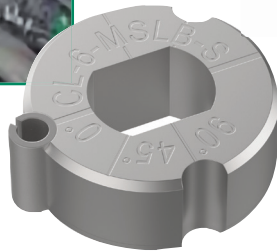
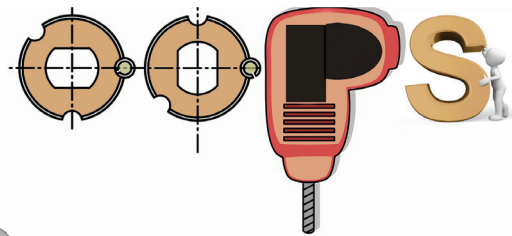


# Drill hole in the wrong spot? Here's an easy fix!

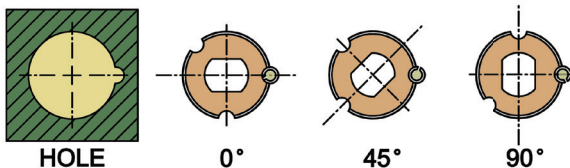


## New Multi-Angle Slotted Locator Bushings



**Multi-Angle Slotted  
Locator Bushings (MSLB-S)**  
can be installed normally (0°)  
or at a 90° or 45° angle in the  
same mounting hole without  
machining a different pin location.

- Use with many types of alignment pins and locating pins to align two holes without binding.
- Slotted Locator Bushings have a tight tolerance in one direction and full relief in the perpendicular direction.
- Available for pin diameters from 1/4 to 1/2", in hardened 440C stainless steel.



**CarrLane**  
MANUFACTURING CO.

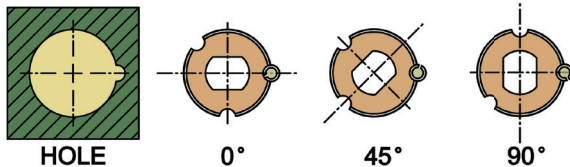
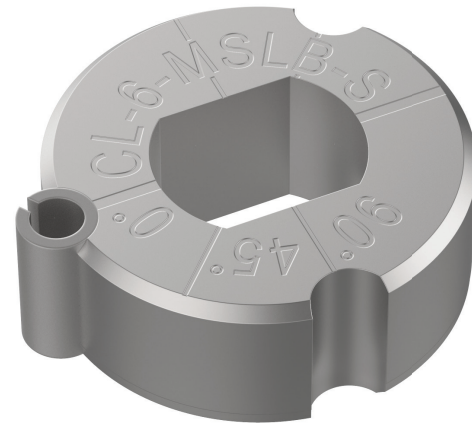
Carr Lane Mfg. Co. | 314.647.6200 | [www.carrlane.com](http://www.carrlane.com)

## More Forgiving than a Standard Slotted Locator Bushing

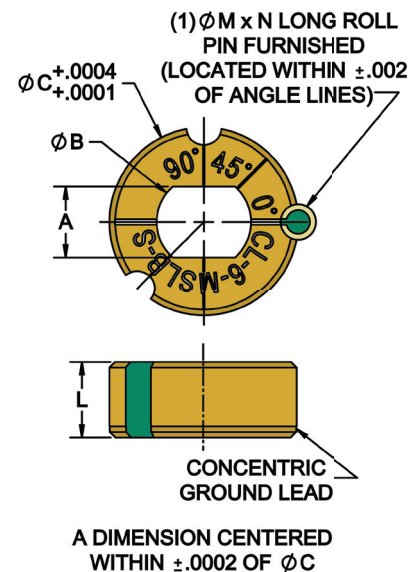
### New item!

Made of heat-treated, passivated stainless steel, Slotted Locator Bushings can be used with many types of alignment pins and locating pins to align two holes without binding. This multi-angle version can be installed normally (0°) or at a 90° or 45° angle in the same mounting hole without machining a different pin location.

Slotted Locator Bushings have a tight tolerance in one direction and full relief in the perpendicular direction. Available for pin diameters from 1/4 to 1/2", in hardened 440C stainless steel. To install, first drill and ream the small hole for the roll pin, then bore the large bushing hole to provide .0003-.0005" press fit. Press in the bushing and roll pin simultaneously for accurate orientation.



Install normally (0°) or at a 90° or 45° angle in the same mounting hole without machining a different pin location.



### INCH

PART NO.	PIN DIA	A	B DIA	C DIA	L	M DIA	N
CL-4-MSLB-S	1/4	.2501 / .2507	.375	.7500	.40	3/16	3/8
CL-5-MSLB-S	5/16	.3126 / .3132	.437	1.0000			
CL-6-MSLB-S	3/8	.3751 / .3757	.500	1.0000			
CL-8A-MSLB-S	1/2	.5001 / .5007	.625	1.0000			